



Nonostante la dichiarazione d'intenti pronunciata all'interno della cartella stampa, da cui ci si aspettava una collezione dal sapore rock, la donna di Ermanno Scervino per il prossimo autunno/inverno è invece decisamente raffinata, femminile, suadente, in linea quindi con lo stile del marchio.

Molteplici i tessuti e gli effetti colore scelti per la collezione, principe di Galles, pied de poule, vigogna, chevron, occhio di pernice e tweed, illuminati da inserti in lurex oro, argento e rame.

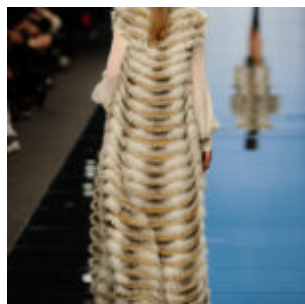
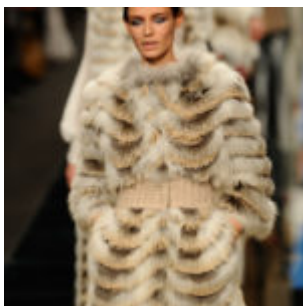
*E. Scervino ph P. Lanzi per Imore*

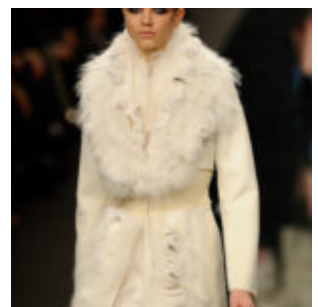
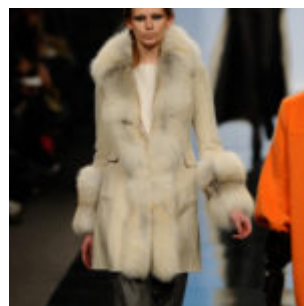
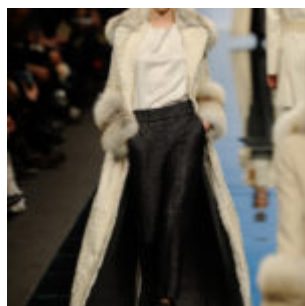
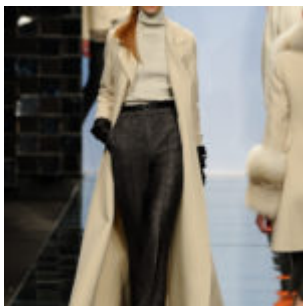
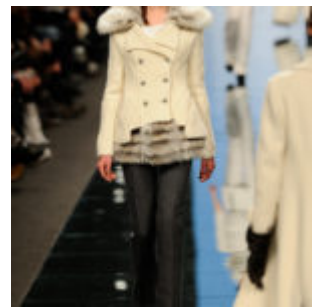
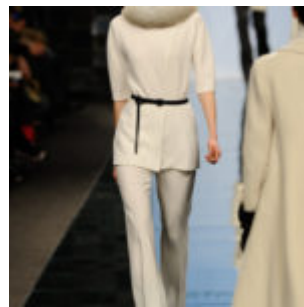
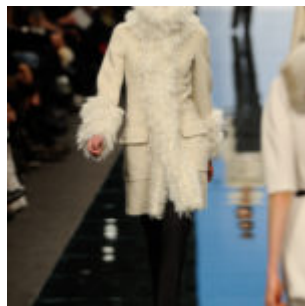
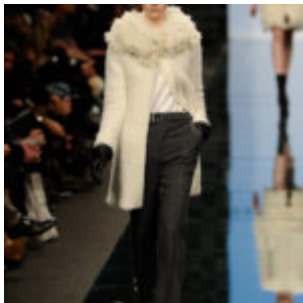
I lunghi cappotti, decostruiti ed essenziali, caratterizzano l'intera proposta insieme alle pregiate pellicce in visone, volpe e persiano.

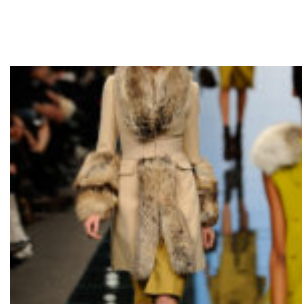
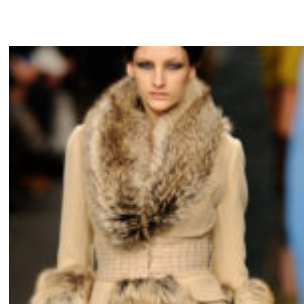
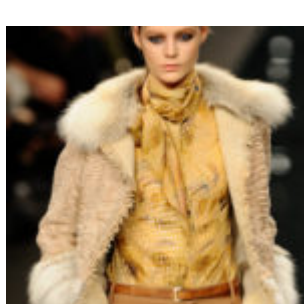
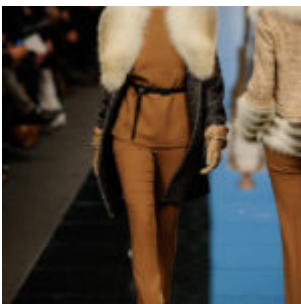
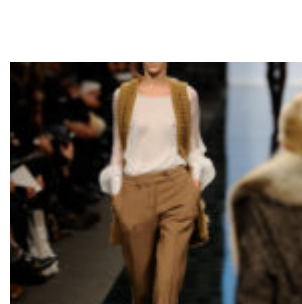
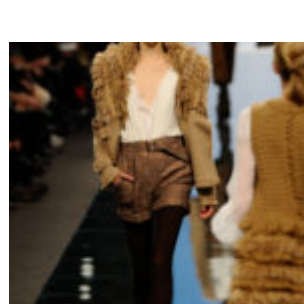
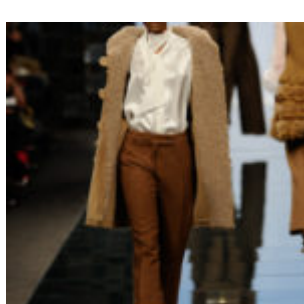
La maglieria presenta vistose allacciature posteriori, più o meno eccentriche, ed eteree bluse in seta con nodo a cravatta.

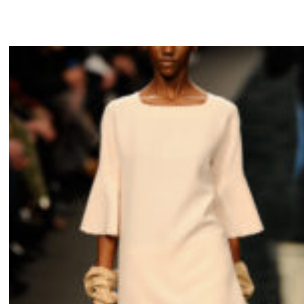
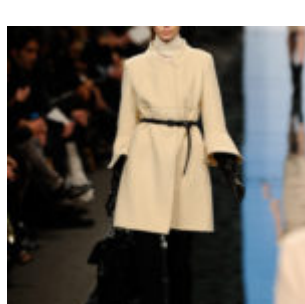
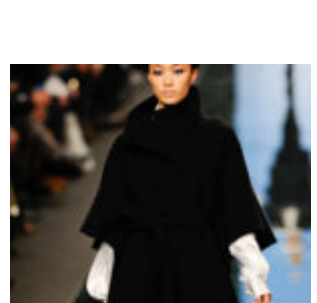
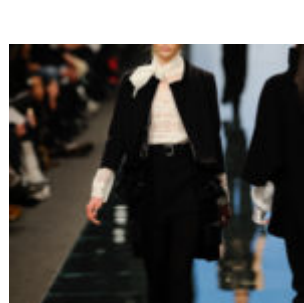
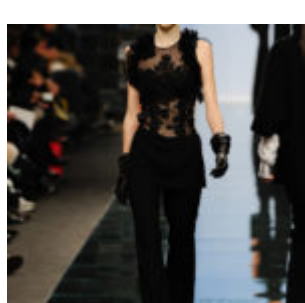
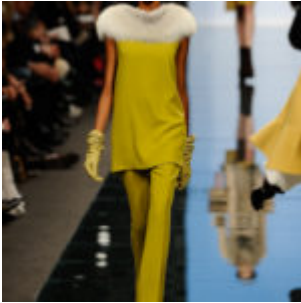
Le gonne sotto al ginocchio esaltano sandali e low boot stringati con platform vertiginosi e i total look in maglia sono accompagnati da piccole borse colorate e catene con charms.

In definitiva una collezione che, pur non avendo stupito gli astanti, si è confermata in linea con l'eleganza e la femminilità costantemente promosse dal suo creatore.

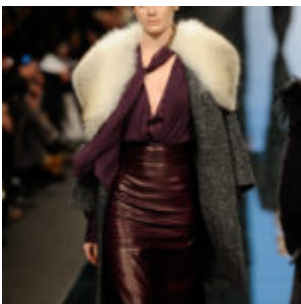
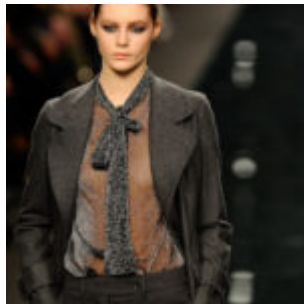
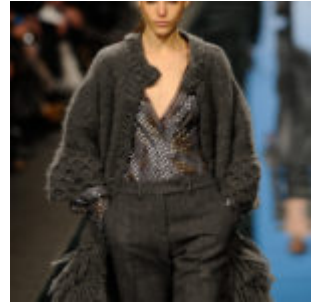














Raffinata e femminile la donna Scervino

